



City of Winter Park Fire-Rescue

Standard Operating Guideline

110.02

Title: Apparatus Operator Requirements

Original Date of Issue: December 6th, 2005

Date Last Revised: October 5th, 2010

Revision Number: I

Total Pages: 5

Purpose: To establish the requirements to be considered by the Department as an "Apparatus Driver / Pump Operator". These guidelines are intended to assist in the evaluation of each employee and their abilities to drive and safely operate each piece of department apparatus.

Scope: This guideline is to be followed by all members of the department. Authority to deviate from this guideline rests with the Deputy Fire Chief who is solely responsible for the results of any deviation.

General:

110.02.01. Minimum Requirements for Driving Vehicles:

All personnel who are assigned driving responsibilities for Fire-Rescue Division apparatus will be required to satisfactorily demonstrate their skills in the following areas before being allowed to drive:

- Pre-Driving Test – Rescue / Engine / Truck
- Practical Driving Exercise – Rescue / Engine / Truck
- Driver Evaluation Test
- Street Test (90% minimum score)
- State of Florida EVOG (16 hours) Course

In addition, each individual will be required to maintain a minimum:

- State of Florida drivers license or,
- State of Florida CDL Class "B" with Emergency Vehicle "E" and Air Brake endorsement

Personnel meeting "only" the driver requirements listed this section of this guideline shall be allowed to drive pumping apparatus for training purposes and will not be assigned any emergency driving responsibilities.

All Fire-Rescue Division employees must become a driver/operator within the first 24 months of employment as a Firefighter. Ref: Labor Agreement Local 1598 IAFF.

110.02.02. Engine / Truck Apparatus Operator:

The requirements to be assigned as an apparatus operator on an Engine or Truck Company are as follows:

- Successful completion of all items listed in Section 110.02.01 of this Guideline.
- Successful completions of a fire apparatus pump operations or “engineer’s course” or equivalent program.
NOTE: If the employee has completed the Engineer’s Course at CFFA, The following items are required to become a Pump Operator.
 - Demonstrate knowledge of LDH (Large Diameter Hose) Operations
 - Demonstrate knowledge of Department specific apparatus
 - Department “Street Knowledge Test” if not completed within the past 12 months with a minimum score of 90%.

Only the individuals meeting these requirements will be assigned to drive and operate the following types of vehicles:

Class "A" Pumper
Class "A" Ladder Pumper

110.02.03. Rescue Apparatus Driving Evaluation

Personnel may operate Rescue vehicles in an emergency mode after the following items have been successfully completed.

- Completion of all items listed in Section 110.02.01 of this Guideline for Rescue Apparatus.

110.02.04. Continuing Education

To be considered as “qualified” to continue to operate as a driver and pump operator, each individual must receive annually, positive driving / pump operating performance evaluations from their supervisor.

All Department drivers and pump operators shall participate in a minimum of 16 hours of in-service training, annually. This in-service training will be done on the Company level utilizing training protocol established and provided by the Deputy Fire Chief. This training is considered skills development in driving fire apparatus, operating pumps, and operating aerial apparatus. **Re: ISO Item 580.D: Driver Operator Training.**

110.02.05. Qualifying

The Company Officer under the oversight of the shift Battalion Chief and the Division Chief of Fire Training perform final testing of each employee. Company Officers should schedule final testing with the Battalion Chief based on the established training and task schedule of the shift, after all individual requirements are met. Use of one evaluator for this skill will serve to ensure consistency in the evaluation process.

110.02.06. Remedial Training

Those individuals identified by their supervisors as needing more individualized or specific training in driving or pumping practices may request such training in writing to the Battalion Chief. This request shall be forwarded to the Deputy Fire Chief who will arrange for said training.

An individual identified, as needing remedial work in this area can be required to attend specific driving and pumping course at the discretion of the Department.

110.02.07. Evaluation Forms

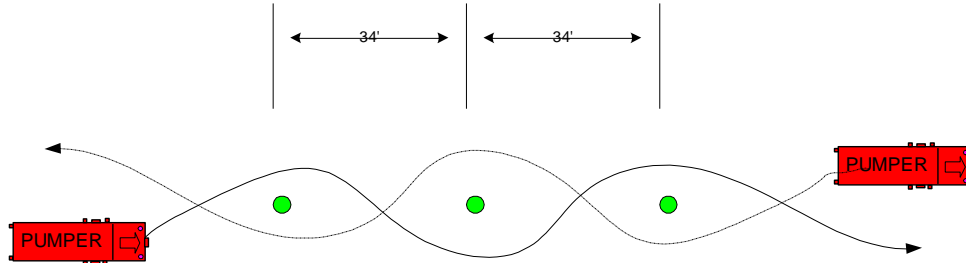
The following evaluation forms are to be used for each employee completing the apparatus driving requirements.

- Pre-Driving Evaluation – one for each apparatus
- To be completed before being assigned to drive any apparatus
- Driver Evaluation Test / Practical Driving Exercise
- To be completed on each individual apparatus
- Employees cannot be assigned to drive any apparatus until they have successfully completed each exercise.

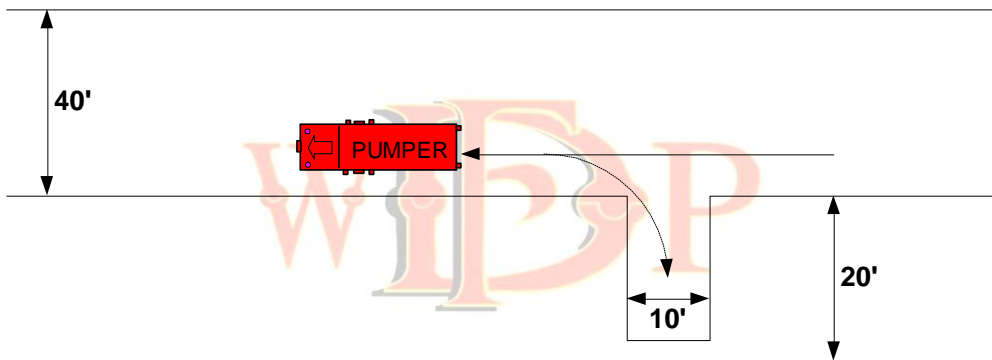
Forms are available from the Battalion Chiefs.

110.02.08. Driving Exercises

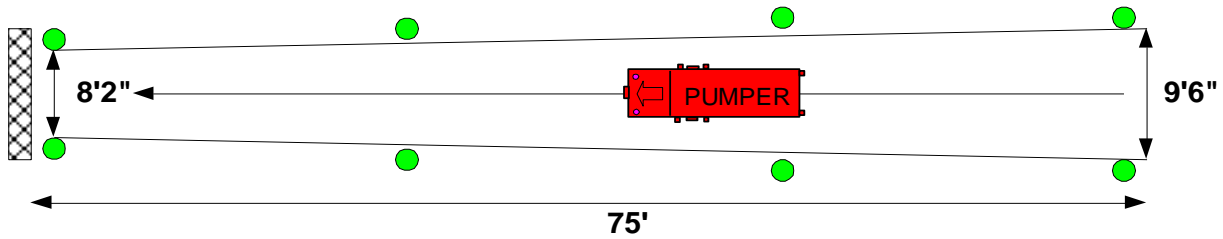
Serpentine Exercise



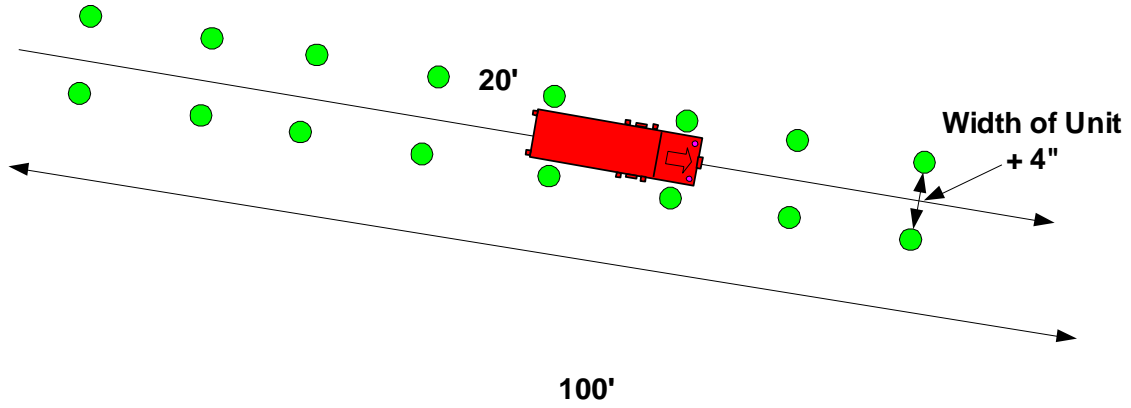
Alley Dock



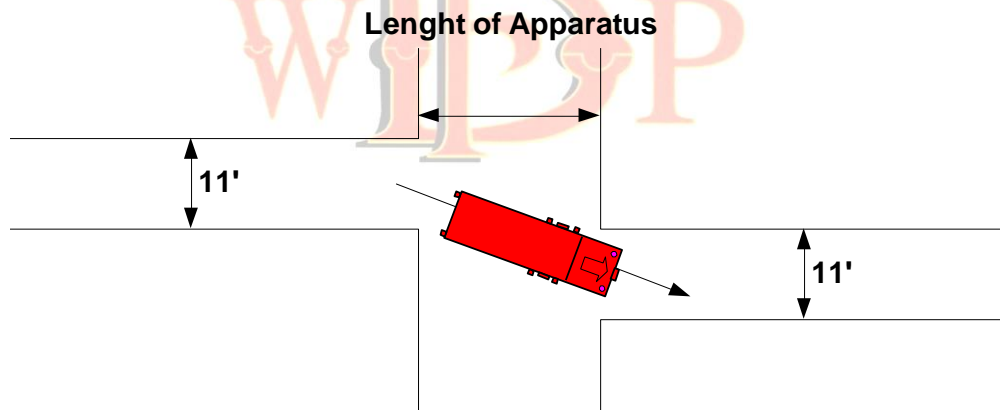
Diminishing Clearance



Straight Line Driving



Opposite Alley



James E. White
Chief of Department